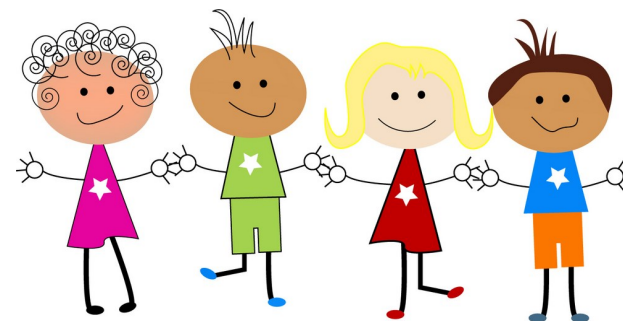




Information Booklet

WELCOME TO STALMINE
NURSERY

Information for
parents and carers
of children entering
Stalmine Nursery
Class.



Welcome to Stalmine

May we take this opportunity to welcome you and your child to Stalmine Primary & Nursery School. Parents often express the wish for an information booklet to help prepare their child for entry into school and the experiences they will encounter there. We hope this booklet will answer that need and that it will be the start of a happy relationship between home and school. We believe that it is very important for your child to see you and their school working together.

The Early Years Foundation Stage

The Early Years Foundation Stage (EYFS) is the stage from birth to the end of the academic year in which a child has their fifth birthday. At Stalmine School we provide for children between the ages of three and five (Nursery and Reception classes) in our Foundation Stage Unit.

The areas of learning that the children will experience during the Foundation Stage are planned in accordance with those set out in the "Statutory Guidance for the EYFS" 2017. This document describes the stages that the children progress through in order to achieve the "Early Learning Goals" by the end of the Reception Year.

Within EYFS there are three prime areas which are most essential for children's healthy development. These are as follows;

- Communication and language
- Physical development
- Personal, social and emotional development

Policies

The policies and procedures for the Foundation Stage, including admissions, equal opportunities, safeguarding children, complaints etc. are available for parents to look at on our school website.

Reporting

In addition to informal discussions and information sharing we offer the following formal methods of reporting to parents:

- End of year written report
- An informal meeting 3 times a year during 'focus child' weeks.

Problems great or small

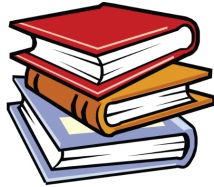
Finally don't worry about something when perhaps a word with a member of staff might put your mind at rest. We operate an open door policy at Stalmine. Staff are usually available for a brief word before or after school. You can also contact school through the class dojo messaging system which you will receive login details for. If however you need a longer discussion, please ask for an appointment. Remember that we like to regard both members of staff and parents/carers as "partners" in the education of our children, academically, socially and morally. If we act on this belief we should have a most successful relationship which can only be of benefit to the children of our school.

Miss Clarke
Foundation Stage Leader



Books

The pre-school children will bring home rhymes each week to share with their adults. From the Spring term, each child is encouraged to choose a book to take home with them each week. We are not expecting that the children can read the book themselves. It is envisaged that they will be "shared" with an adult and is designed to encourage a love of books. Each child is given a reading record. Please feel free to make comments in this and the staff will do the same.



Tapestry

All children will have a Tapestry file, which includes photographs, observations and assessments. You will receive log-in details specific to your child so that you can contribute to them.

Newsletter

Each month you will receive a newsletter informing you of a variety of events related to school life. This will also provide you with dates for future events. Additional letters are sent home as and when required. Please remember to check your child's bag daily.

Website: <http://www.stalmineprimary.co.uk/>

Medicines: If your child needs medication during the school day you will be required to sign a form giving us permission to administer the medication. Please speak to a member of staff who will advise you. * We can only administer medicine that has a pharmacy label with your child's name.



There are also four specific areas, through which the three prime areas are strengthened and applied. The specific areas are:

- Literacy
- Mathematics
- Understanding the world
- Expressive arts and design

"Practitioners working with the youngest children are expected to focus strongly on the three prime areas, which are the basis for successful learning in the other four specific areas. The three prime areas reflect the key skills and the capacities all children need to develop and learn effectively and become ready for school. It is expected that the balance will shift towards a more equal focus on all areas of learning as the children grow in confidence and ability within the three prime areas." EYFS 2017 All the areas are delivered through planned, purposeful play with a balance of adult led and child initiated activities.

Organisation

At Stalmine school and Nursery children are accommodated in a Foundation Stage Unit. The children follow the same curriculum and are therefore taught together as one class with differentiated activities.

Daily Routines of the school

The school day begins at 8:45.

During the sessions the children follow a timetable which takes into account their need for a wide range of practical experiences and play activities.



The children have continuous access to outdoor play.

There is a snack table in the unit. Water and fresh fruit are available to the children through out the day and it is their choice as to when they access this.



Lunchtime is 11:45—12:15pm. Children who are booked in for morning and afternoon sessions on the same day will not be charged for this time. However, you will need to either provide a packed lunch or pay for a school meal at the cost of £2.25 daily.

***Please note if you are on certain benefits your child may be entitled to free school meals. If you think you may be entitled please ask at the school office.**

Home time is at 11:45am for children attending morning sessions, parents are asked to collect their children from the school office. For children attending full days or afternoon only sessions, please collect your child at 3:15 from the reception playground door.



Additional Information

Key person: your child will be assigned to a "key person." This is a statutory requirement for all EYFS children and is to help the child become familiar with the provision and to feel confident and safe within within it. It is hoped that the key person will develop a bond with the child (and the child's parents) offering a settled, close relationship. The TA3 in the class is the key person for all nursery children with Miss Clarke as an additional person.

School uniform

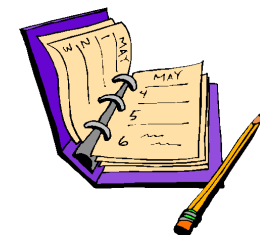
It is not essential that children in the nursery wear a school uniform, this is completely the choice of parents and carers. If you choose to send your child in their own clothes please make sure that these are suitable for outside and messy activities!

Naming of clothes etc.

Please make sure that all items of clothing are clearly named. This save staff a lot of time in school.

Home/School Diary

Your child will be given a small diary. We will write any comments or notes for you in here so please check it every day. You may also put any information in here for staff and we will check them every day.



Getting ready for school

It will be most helpful to your child if you can encourage him/her to do some of these things independently before they come to nursery.

- * Dress/undress themselves
- * Take off their coat, gloves and hat and hang them up
- * Put their own coat on
- * Change their shoes
- * Use the toilet properly and flush it
- * Wash and dry hands
- * Tidy and clear away toys
- * Share toys and take turns
- * Say their own name

Staff working in the Foundation Unit

Working within the Foundation Stage Unit at any one time are: one Teacher: Miss Clarke and at least one level 3 Teaching Assistant:



Things your child needs for school

- * Spare clothes. It is useful if you could send in some spare clothes in case of toileting accidents or overzealous play in the water tray! These may be kept in your child's pump bag on their peg. (Please no rucksacks due to lack of space.)
- * Wellington boots and a coat with a hood. (We play out in all weather.) We do have some spare wellies but it is useful if your child could leave a pair in school as these will be used often.
- Your child will be provided with a water bottle and a book bag when they start nursery.

We would like to ask that you encourage your child not to bring toys from home into school. (Unless requested for a specific topic etc.)

